

# 21-29

W. EASY STREET

SIMI VALLEY, CALIFORNIA

VENTURA COUNTY



## For Lease

INSTITUTIONALLY MANAGED | FLEXIBILITY TO GROW IN A PORTFOLIO | DELIVERING UNPRECEDENTED CUSTOMER SERVICE

FOR INFORMATION,  
CONTACT:

**GRANT FULKERSON, SIOR**

Principal  
818.304.4956  
CA License #01483890

**ERICA BALIN**

Principal  
818.444.4912  
CA License #01481476

**BRYCE KOLB**

Associate  
818.444.4931  
CA License #02240862

### Multi-Tenant Industrial Property

- High Image Professional Business Park
- Strategically Located Along Main Thoroughfare
- Gated Site Providing Additional Security
- Immediate Access to Highway 118 Via Madera Rd
- Near Numerous Retail Amenities
- Impressive Clearance Heights
- Zoned GI-SP



**LEE & ASSOCIATES**  
COMMERCIAL REAL ESTATE SERVICES  
Corporate ID #01191898



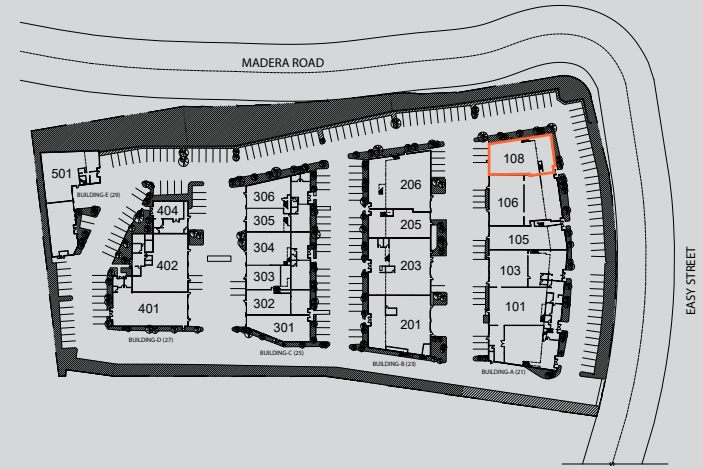
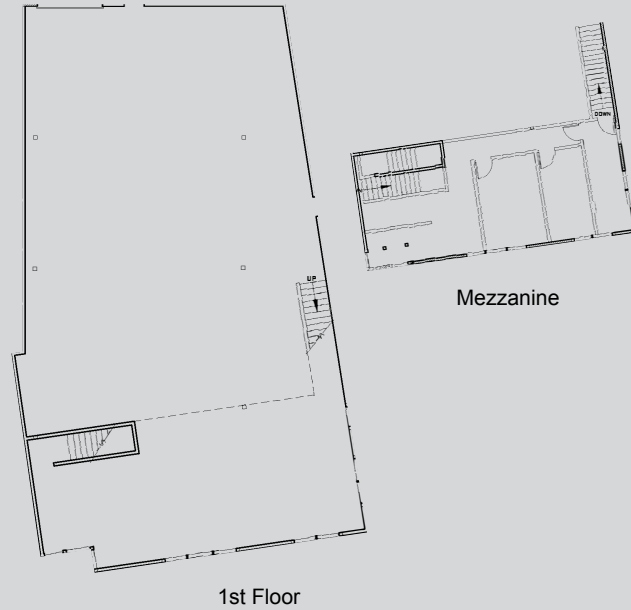
**Rexford  
Industrial**



## Multi-Tenant Industrial Property

- Total SF: 6,423
- Whse SF: 2,649
- Ground Level Office SF: 1,435
- Mezzanine Level Office SF: 2,339
- Loading: 1 GL
- Lease Rate: \$1.39 PSF MG\*

\*Plus a \$0.08. per square foot estimated Common Area Maintenance (CAM) fee



# For Lease

# 6,423 SF

21 W. EASY STREET, UNIT 108, SIMI VALLEY, CA

VENTURA COUNTY

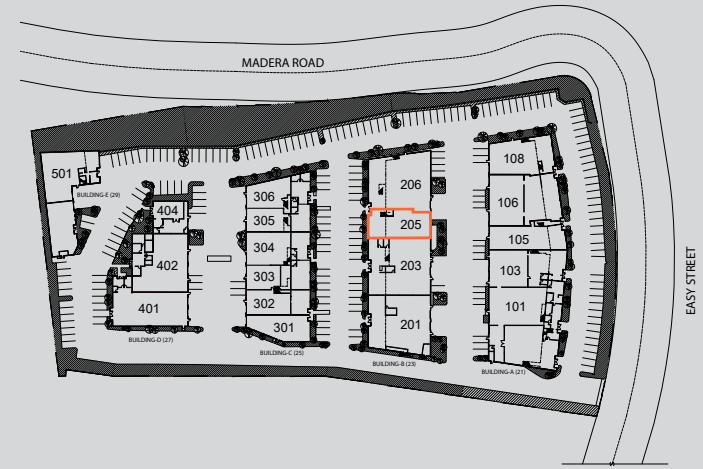
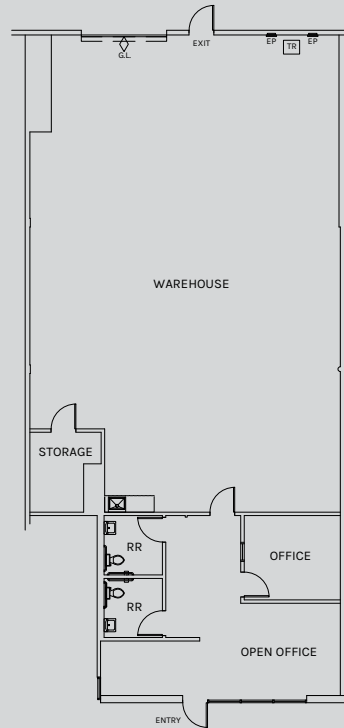


**Rexford  
Industrial**

## Multi-Tenant Industrial Property

- Total SF: 2,955
- Whse SF: 2,280
- Ground Level Office SF: 675
- Loading: 1 GL
- Lease Rate: \$1.49 PSF MG\*

\*Plus a \$0.12. per square foot estimated Common Area Maintenance (CAM) fee



# For Lease

# 2,955 SF

23 W. EASY STREET, UNIT 205, SIMI VALLEY, CA

VENTURA COUNTY

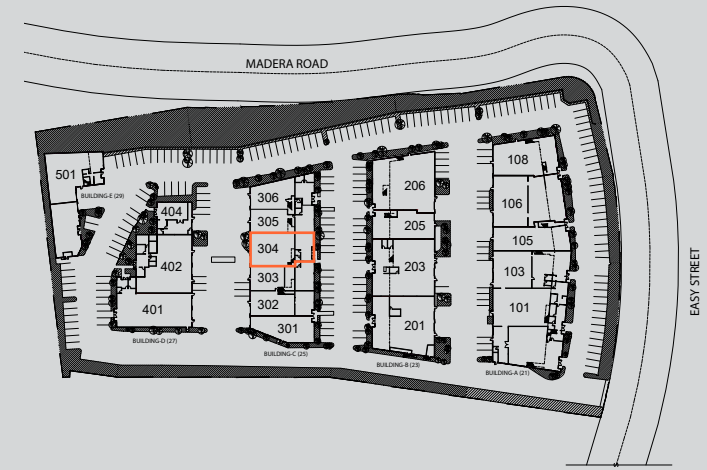
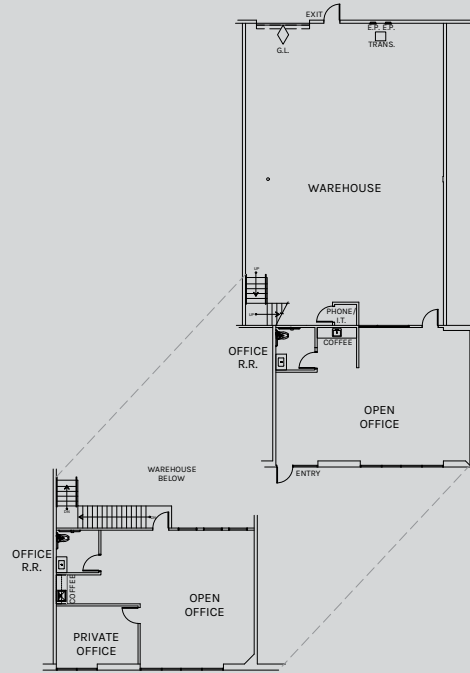




## Multi-Tenant Industrial Property

- Total SF: 4,206
- Whse SF: 2,212
- Ground Level Office SF: 982
- Mezzanine Level Office SF: 1,012
- Loading: 1 GL
- Lease Rate: \$1.49 PSF MG\*

\*Plus a \$0.11. per square foot estimated Common Area Maintenance (CAM) fee



# For Lease

# 4,206 SF

25 W. EASY STREET, UNIT 304, SIMI VALLEY, CA

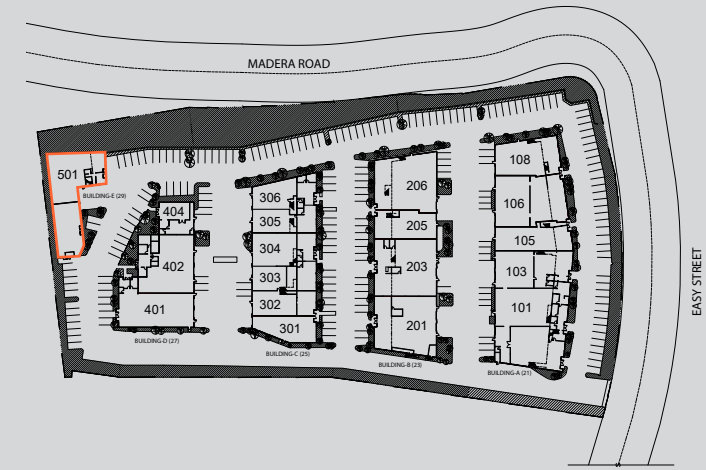
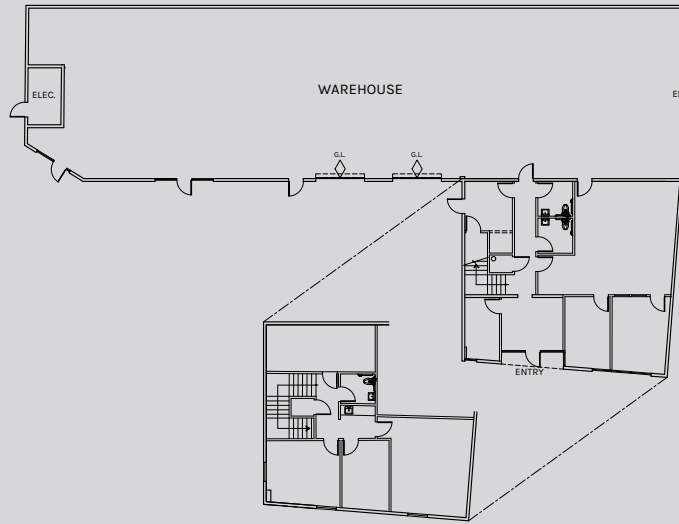
VENTURA COUNTY



## Multi-Tenant Industrial Property

- Total SF: 7,237
- Whse SF: 4,512
- Ground Level Office SF: 1,672
- Mezzanine Level Office SF: 1,053
- Loading: 2 GL
- Lease Rate: \$1.45 PSF MG\*

\*Plus a \$0.11. per square foot estimated Common Area Maintenance (CAM) fee



# For Lease

# 7,237 SF

29 W. EASY STREET, UNIT 501, SIMI VALLEY, CA

VENTURA COUNTY



**Rexford  
Industrial**