

FOR LEASE | CALABASAS, CA



SCOTT CASWELL, SIOR
Principal
818.266.7772
scaswell@lee-re.com
DRE# 00853607

ERICA BALIN
Principal/Managing Director
818.444.4912
ebalin@lee-re.com
DRE# 01481476

RYAN PELINO
Associate
818.854.5514
rpelino@lee-re.com
DRE# 02223932

 **LEE &
ASSOCIATES**
COMMERCIAL REAL ESTATE SERVICES

FOR LEASE | CALABASAS, CA

AERIAL OVERVIEW



SCOTT CASWELL, SIOR
Principal
818.266.7772
scaswell@lee-re.com
DRE# 00853607

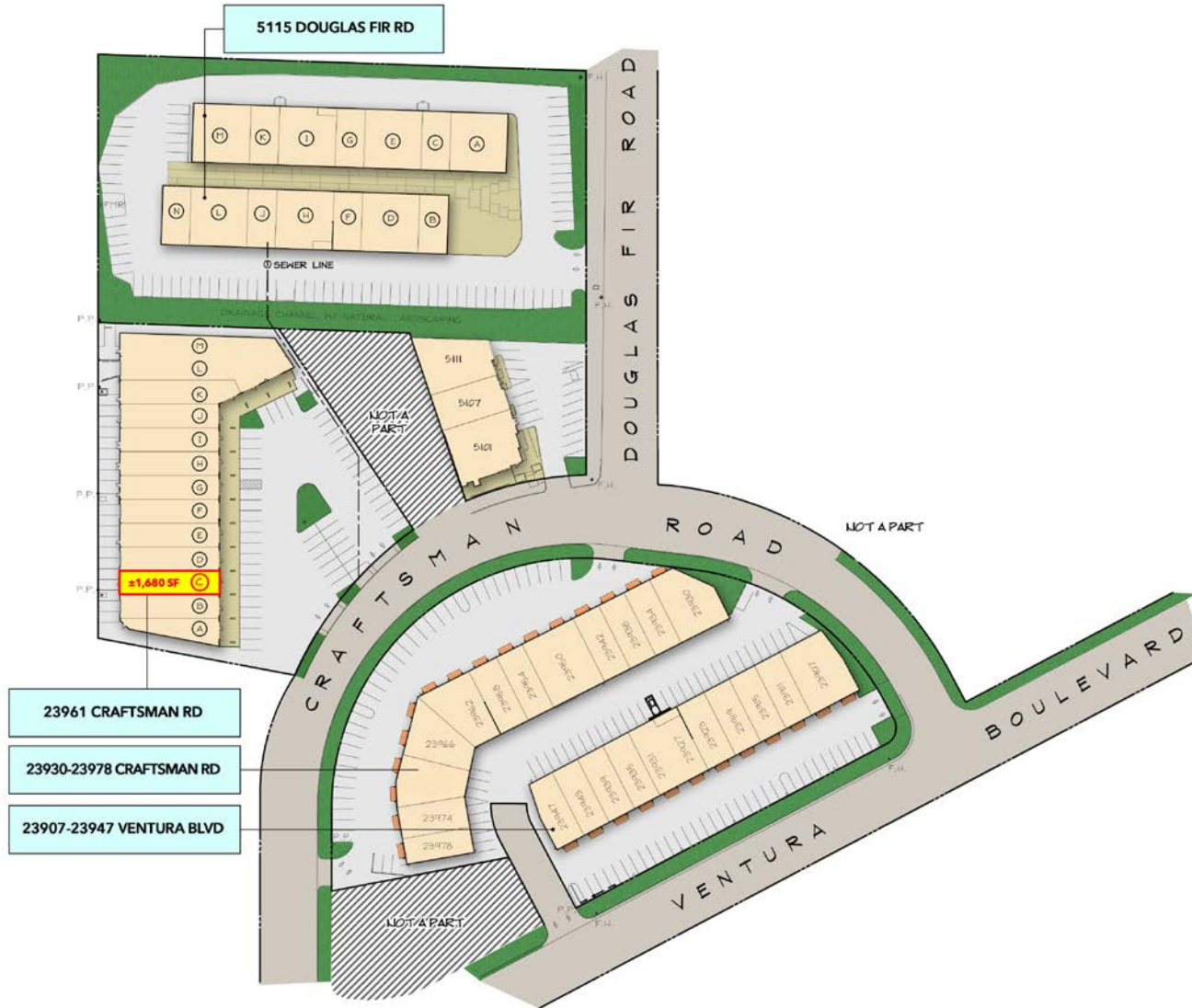
ERICA BALIN
Principal/Managing Director
818.444.4912
ebalin@lee-re.com
DRE# 01481476

RYAN PELINO
Associate
818.854.5514
rpelino@lee-re.com
DRE# 02223932

 **LEE &
ASSOCIATES**
COMMERCIAL REAL ESTATE SERVICES

FOR LEASE | CALABASAS, CA

SITE PLAN



- 23961 CRAFTSMAN RD
- 23930-23978 CRAFTSMAN RD
- 23907-23947 VENTURA BLVD

CRAFTSMAN CIRCLE / CALABASAS INVESTMENT GROUP SITE PLAN
3/11/2024 N.T.S.



SCOTT CASWELL, SIOR
Principal
818.266.7772
scaswell@lee-re.com
DRE# 00853607

ERICA BALIN
Principal/Managing Director
818.444.4912
ebalin@lee-re.com
DRE# 01481476

RYAN PELINO
Associate
818.854.5514
rpelino@lee-re.com
DRE# 02223932

 **LEE &
ASSOCIATES**
COMMERCIAL REAL ESTATE SERVICES

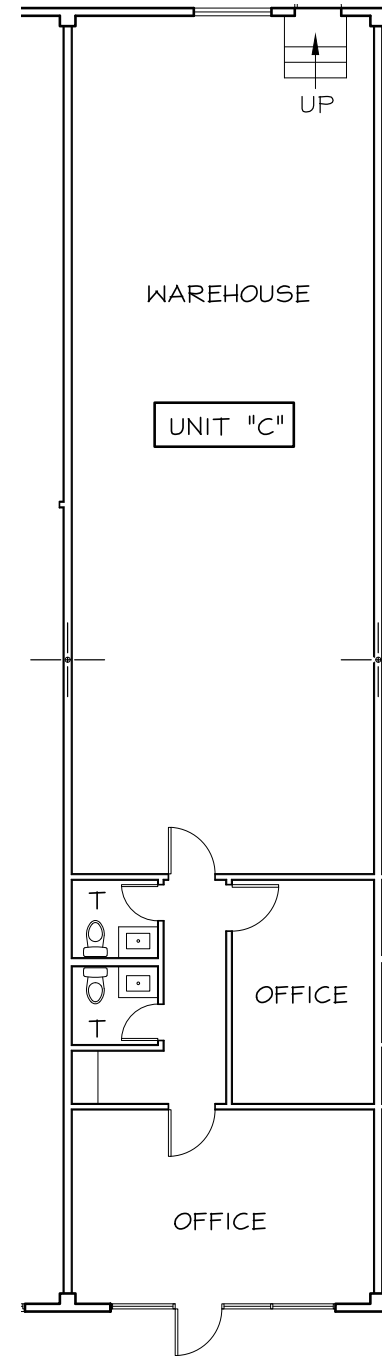
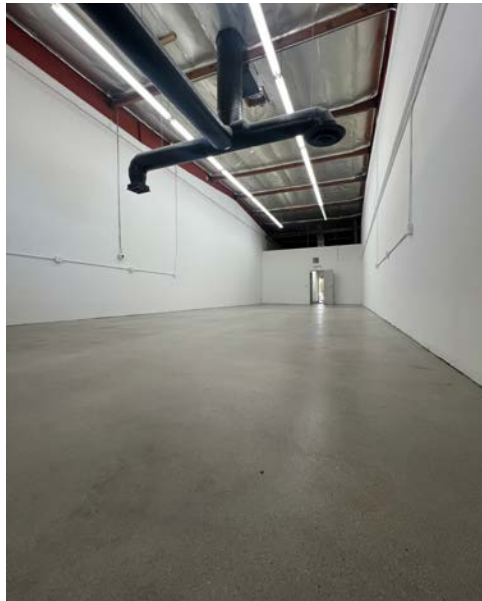
FOR LEASE | CALABASAS, CA

23961 CRAFTSMAN RD., UNIT C

PROPERTY DETAILS

Total SF: 1,680 Square Feet
Loading: Rear Loading
Clear Height: 12 Feet
Power: 100 AMPS | 120V | 3 PHS.
Lease Rate: **\$1.80 MG PSF**
Available: Now

Highlights: Excellent Small Unit
100% HVAC
Immediate 101 Freeway Access
High End Industrial Park
L.A. City Gross Receipts Savings



SCOTT CASWELL, SIOR
Principal
818.266.7772
scaswell@lee-re.com
DRE# 00853607

ERICA BALIN
Principal/Managing Director
818.444.4912
ebalin@lee-re.com
DRE# 01481476

RYAN PELINO
Associate
818.854.5514
rpelino@lee-re.com
DRE# 02223932

 **LEE & ASSOCIATES**
COMMERCIAL REAL ESTATE SERVICES

FOR LEASE | CALABASAS, CA

AMENITIES



SCOTT CASWELL, SIOR
Principal
818.266.7772
scaswell@lee-re.com
DRE# 00853607

ERICA BALIN
Principal/Managing Director
818.444.4912
ebalin@lee-re.com
DRE# 01481476

RYAN PELINO
Associate
818.854.5514
rpelino@lee-re.com
DRE# 02223932

LEE & ASSOCIATES
COMMERCIAL REAL ESTATE SERVICES

No warranty or representation is made to the accuracy of the foregoing information. Terms of sale or lease and availability are subject to change or withdrawal without notice. CID #01191898